



LOYAL

SAFE WORKING

Aluminium Scaffold Towers Ltd.

01353 778811

sales@aluminium-scaffoldtowers.co.uk

www.aluminium-scaffoldtowers.co.uk

Trade King 730

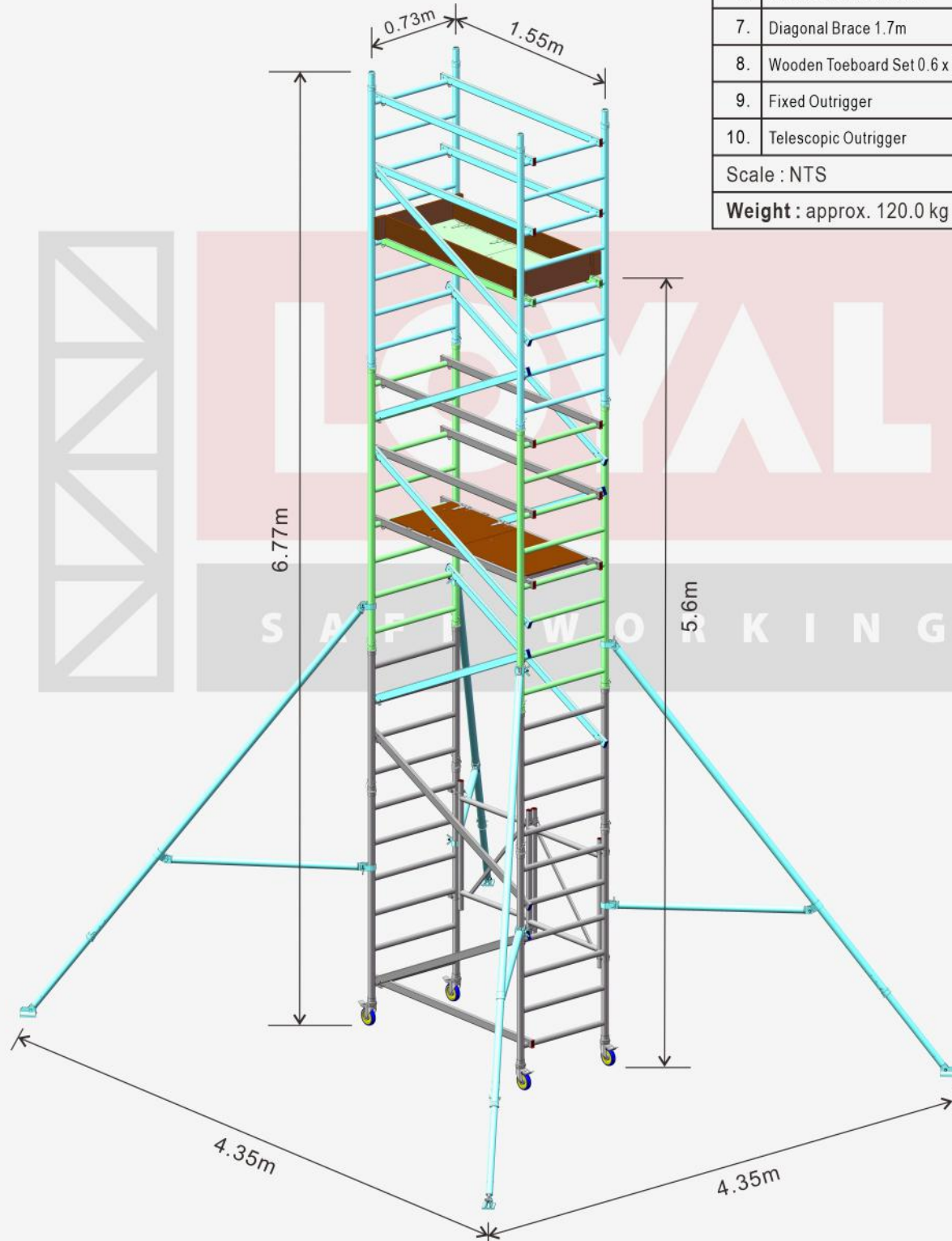
Tested & Certified to EN 1004-1:2020



Type Approved Safety Regular Production Surveillance
www.tuv.com ID: 1113297296

Tower Dimension : 0.73m(W) x 1.55m(L) x 6.77m(H)
Max. Platform Height : 5.6m, Max. Working Height : 7.6m

Safety Working Load :
Platform - 230 kg when load uniformly distributed



Item	Description	Qty.	Upgrade
1.	Fixed Castor Wheel Ø125mm	4	-
2.	4 Rung Frame 0.73 x 1.0m	2	-
3.	6 Rung Folded Base Frame Unit	1	-
4.	8 Rung Frame 0.73 x 2.0m	-	4
5.	Trapdoor Platform 0.6 x 1.55m	1	1
6.	Horizontal Brace 1.55m	5	4
7.	Diagonal Brace 1.7m	2	7
8.	Wooden Toeboard Set 0.6 x 1.55m	1	-
9.	Fixed Outrigger	-	-
10.	Telescopic Outrigger	-	4

Scale : NTS

Ref. : TKG355U755

Weight : approx. 120.0 kg